



FIELD : Mereenie

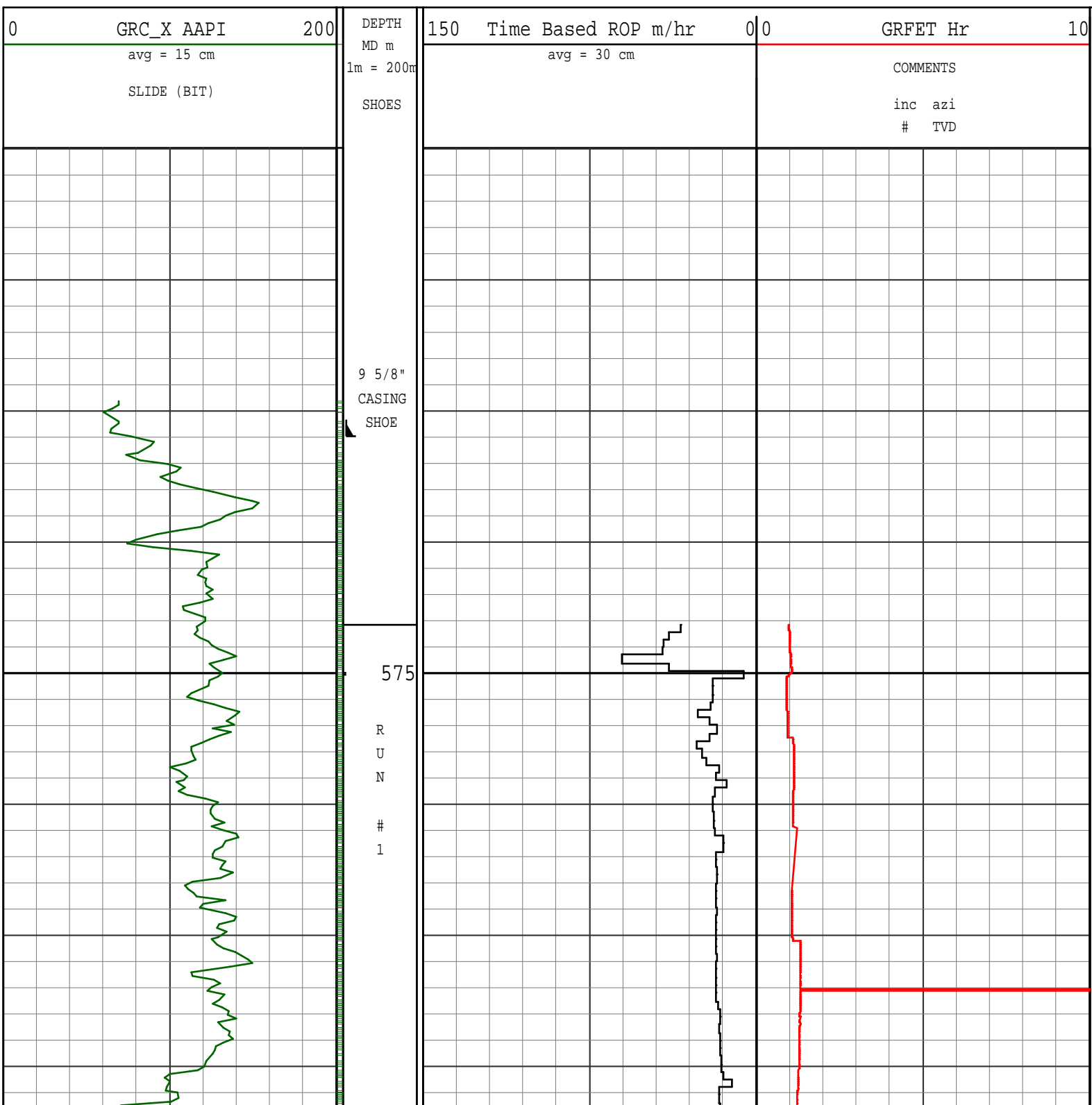
REMARKS:

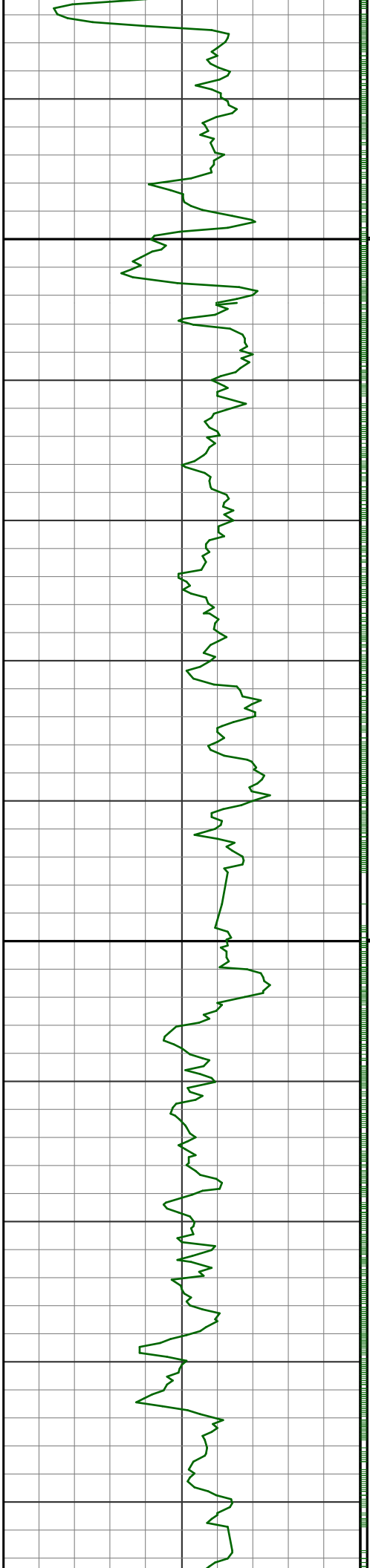
NOTICE - All interpretations are opinions based on inferences from electrical or other measurements and we do not guarantee the accuracy or correctness of any interpretations. We shall not, except in the case of gross or wilful negligence on our part, be liable or responsible for loss, costs, damages or expenses incurred or sustained by anyone as a result of any interpretations made by one of our officers, agents or employees. These interpretations are also subject to our General Terms and Conditions as set out in our current Price Schedule.

PATHFINDER - A Schlumberger Company

Version No : RX5 V6.05 Release 20Sep2013

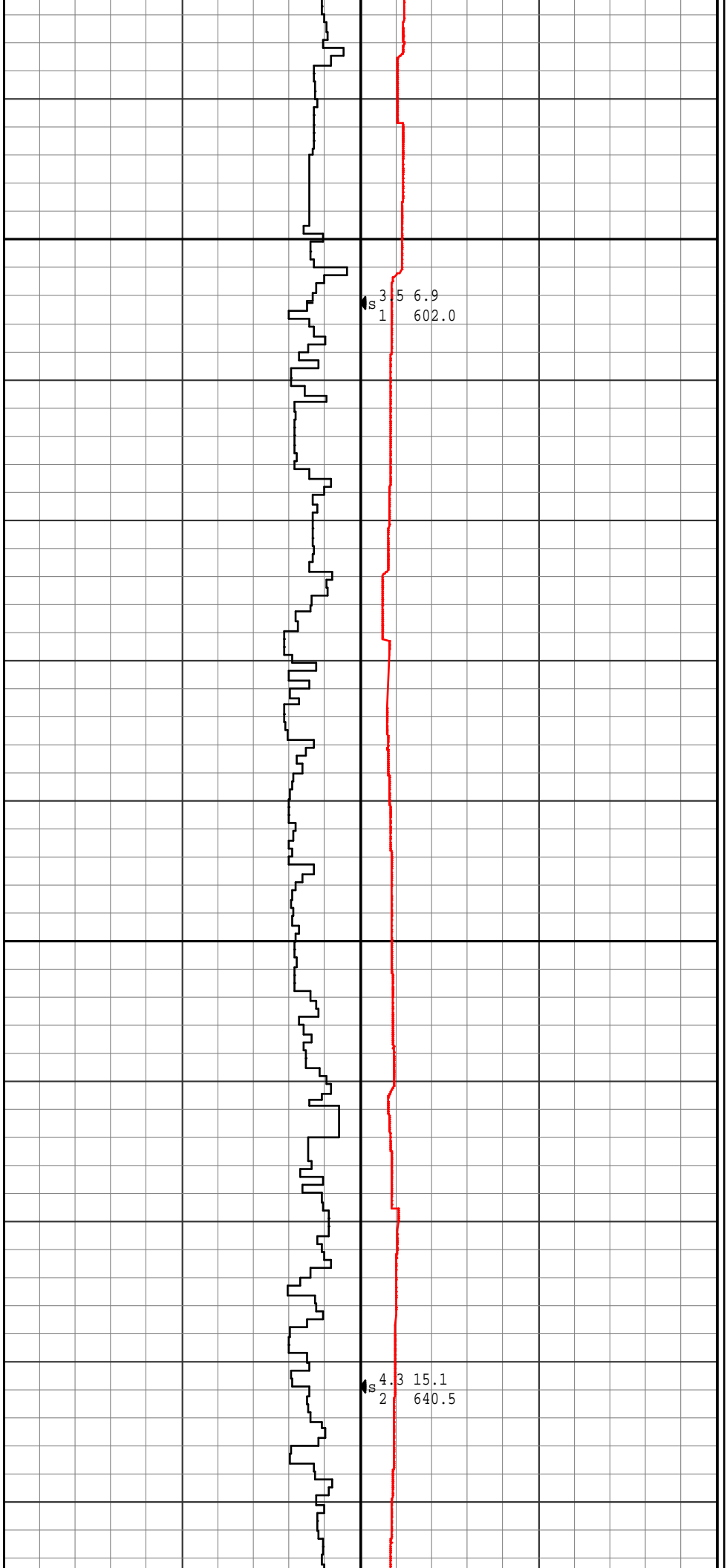
Plot Time : 28-Dec-2013 04:20

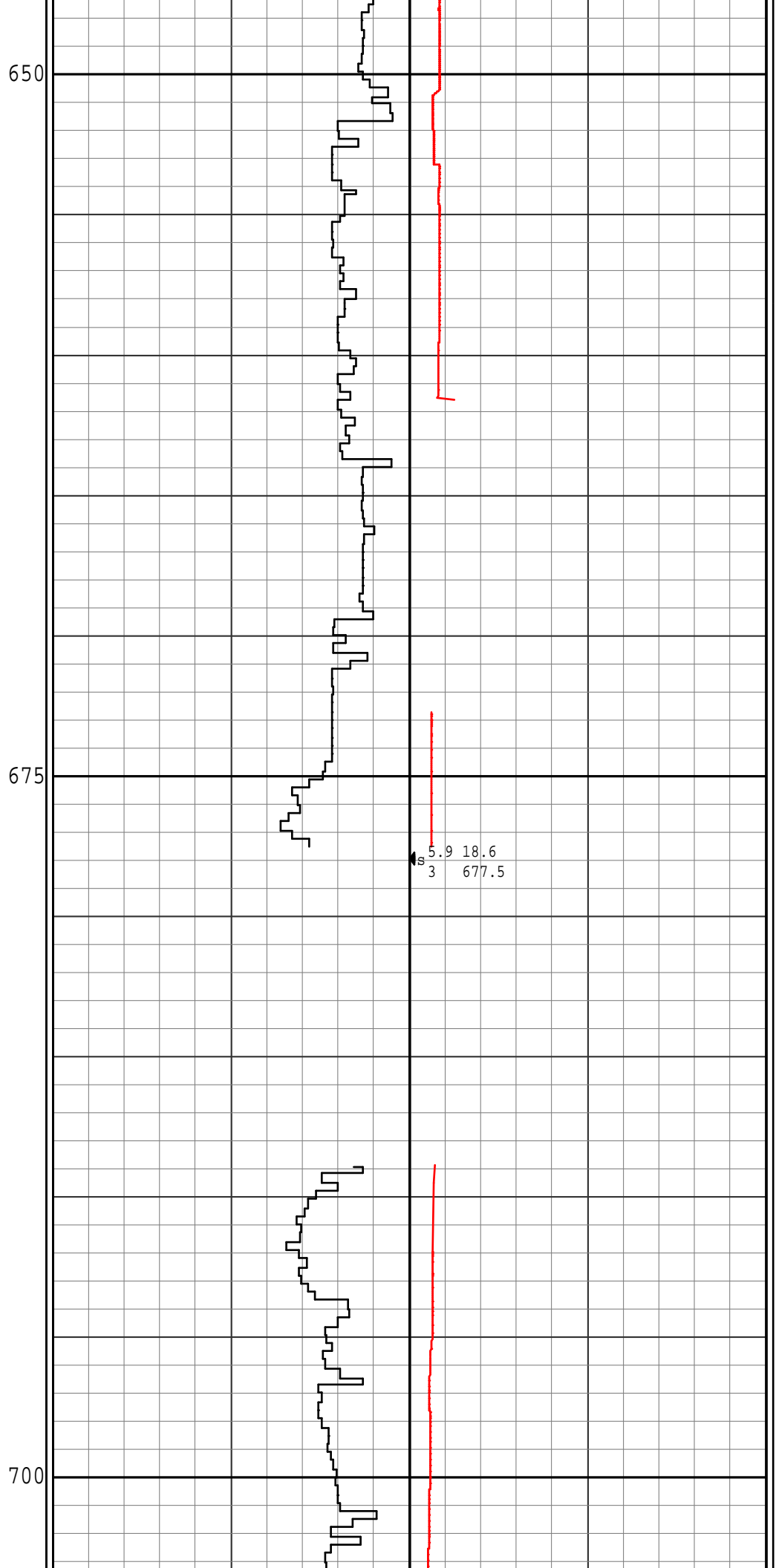
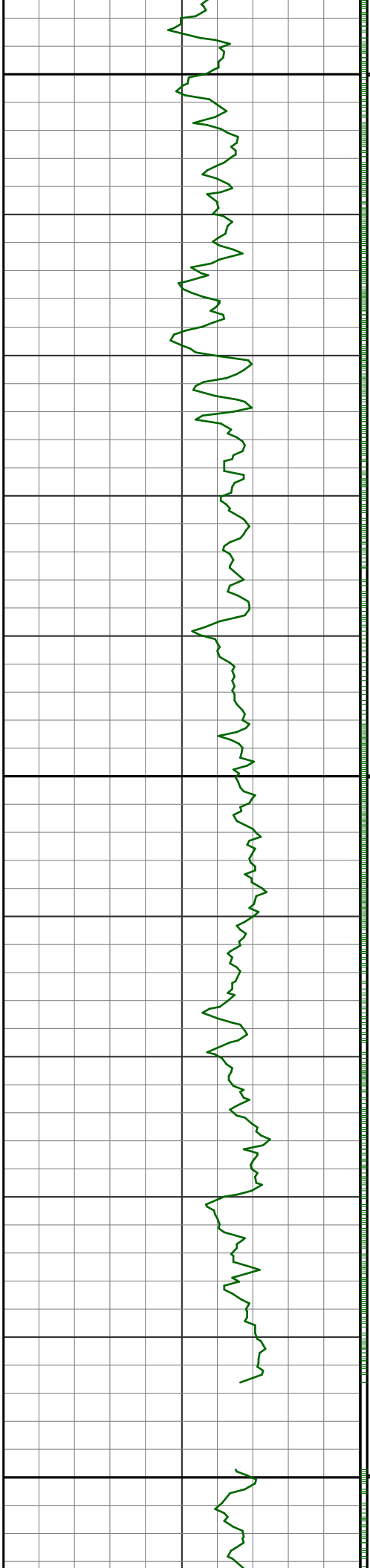


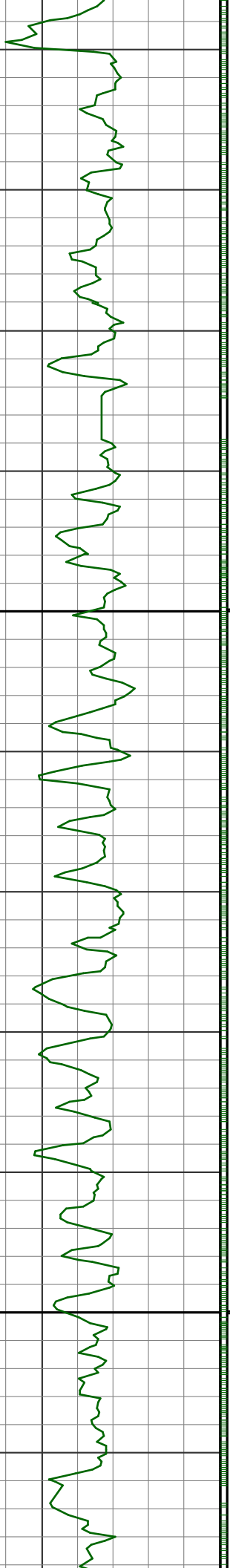


600

625

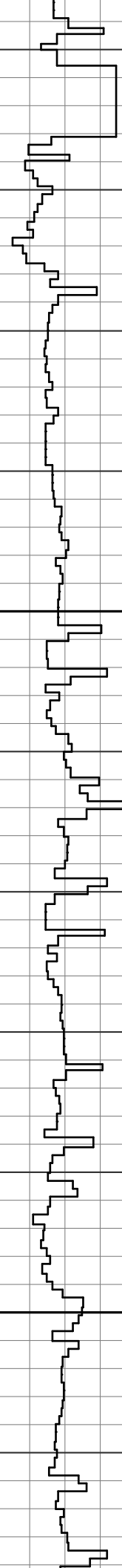






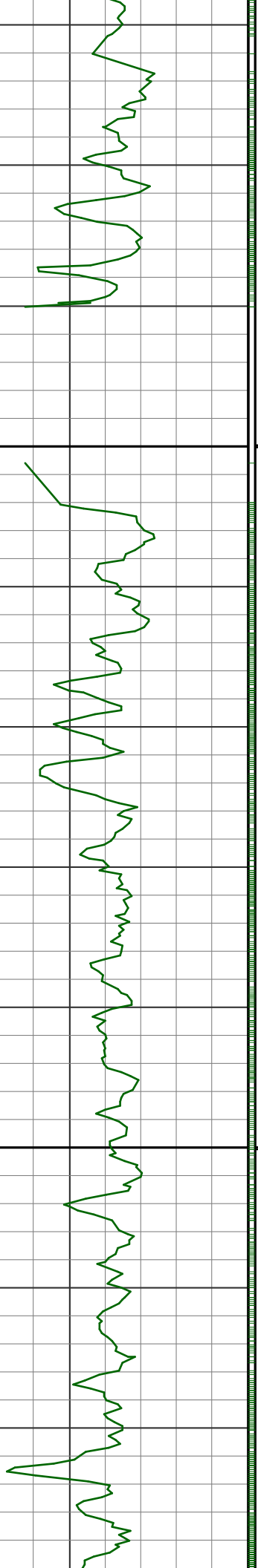
725

750



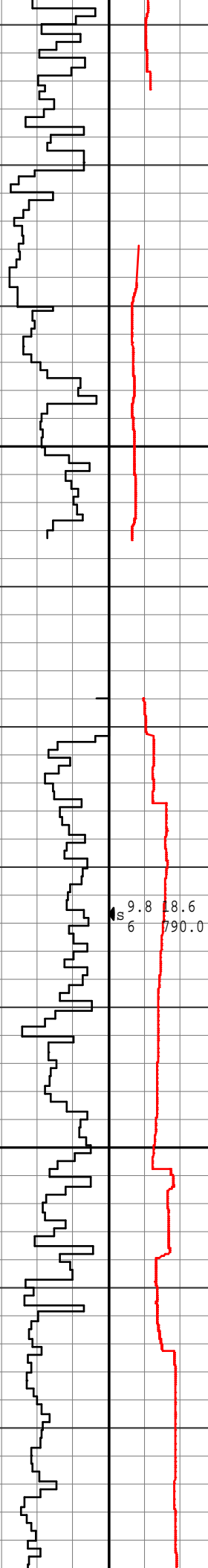
7.6 19.0
S 4 715.3

8.9 18.7
S 5 753.0

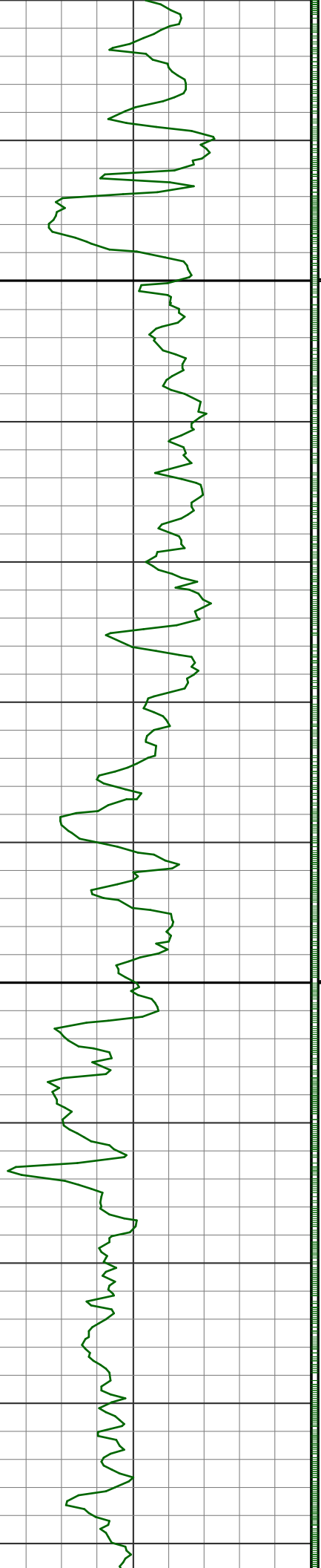


775

800

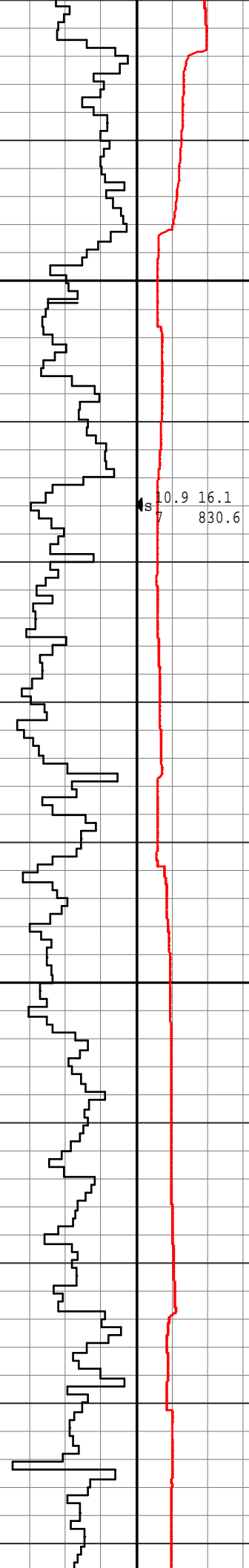


9.8 18.6
6 790.0

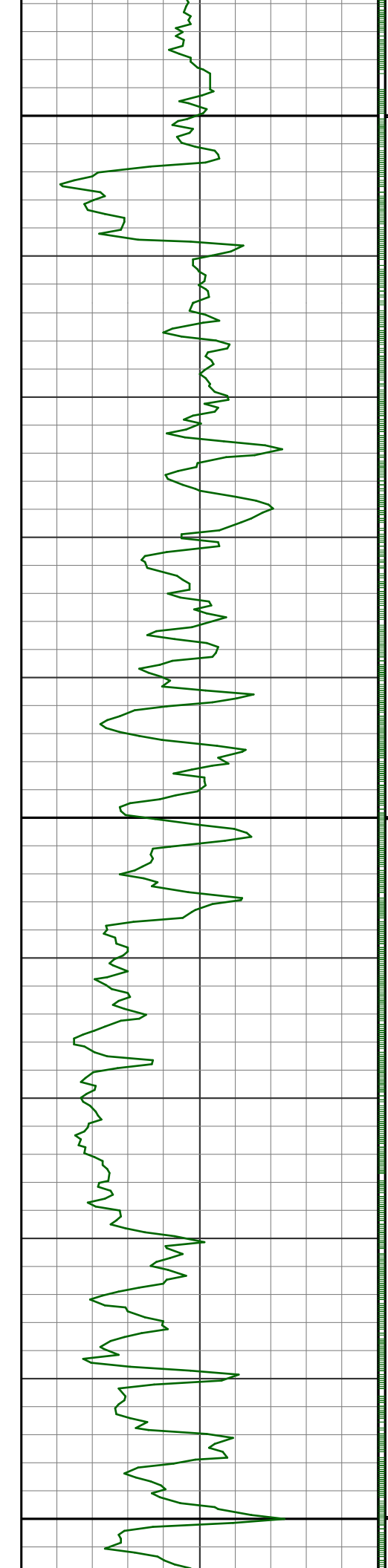


825

850



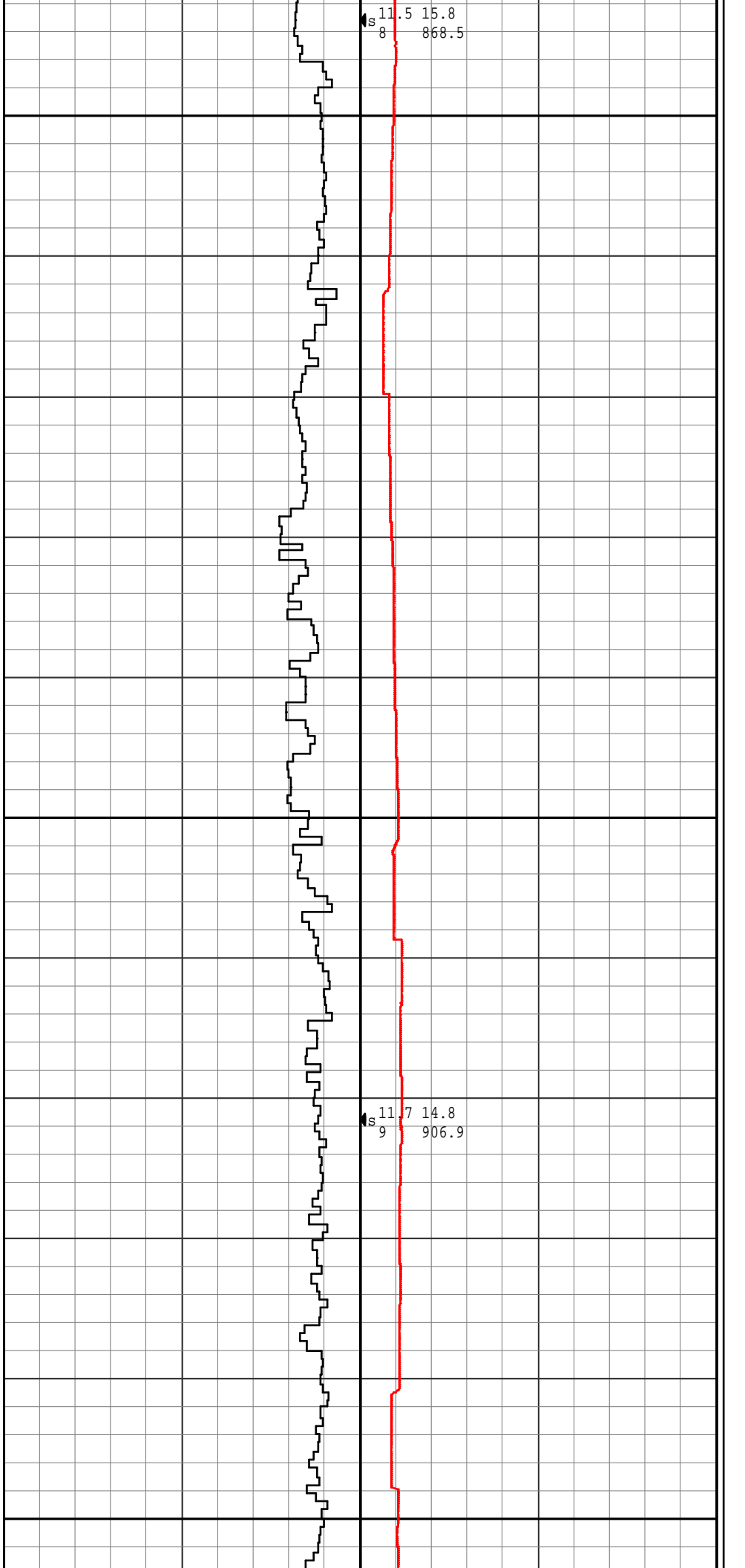
10.9 16.1
s 7 830.6

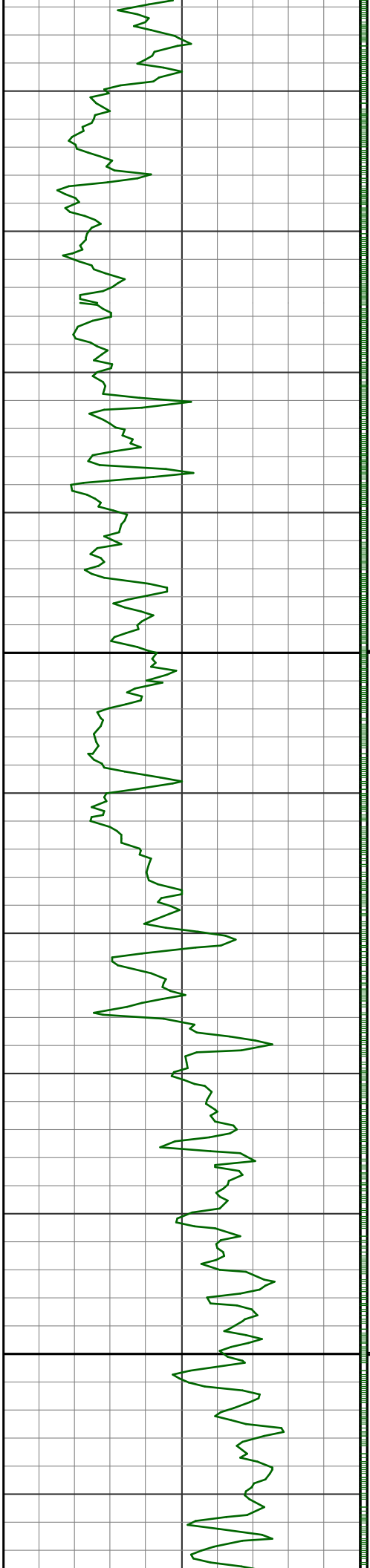


875

900

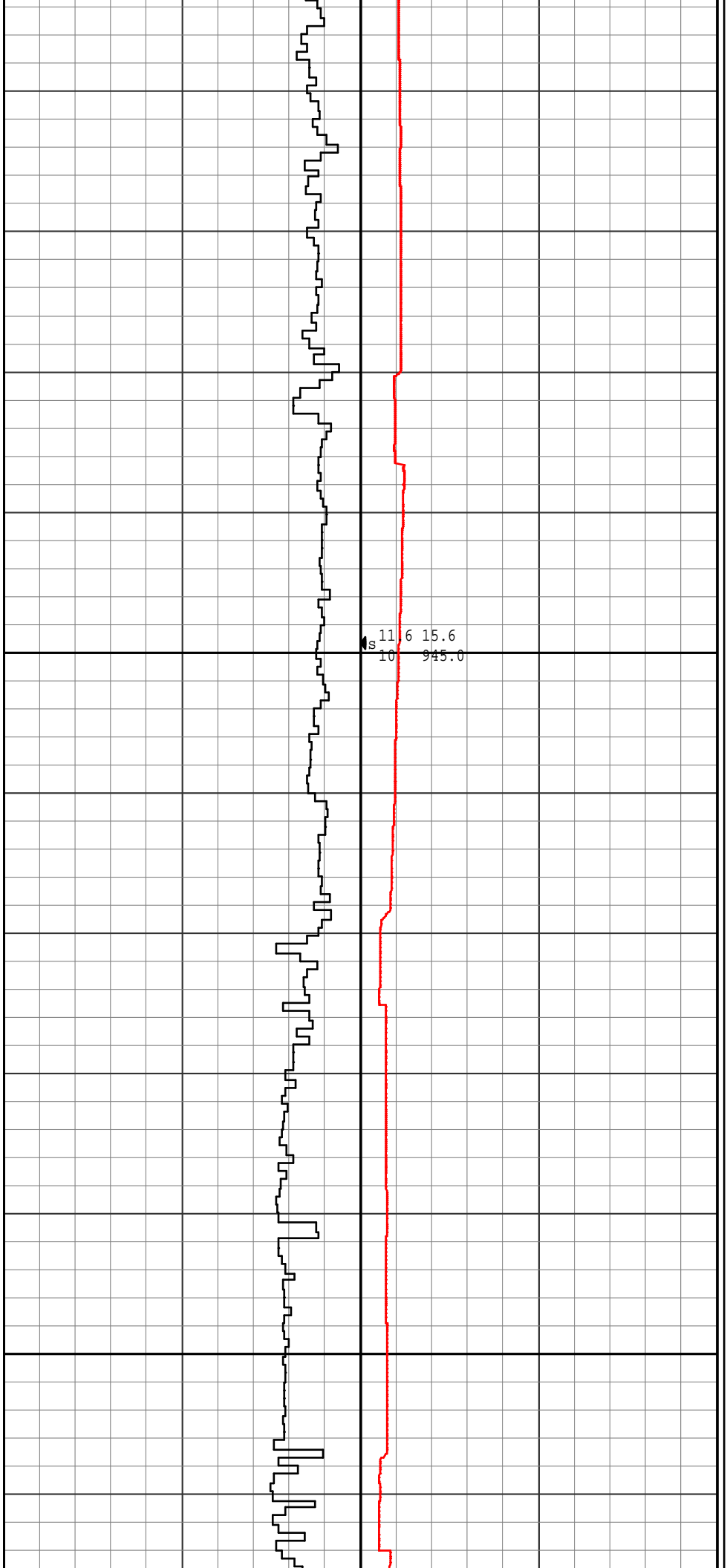
925

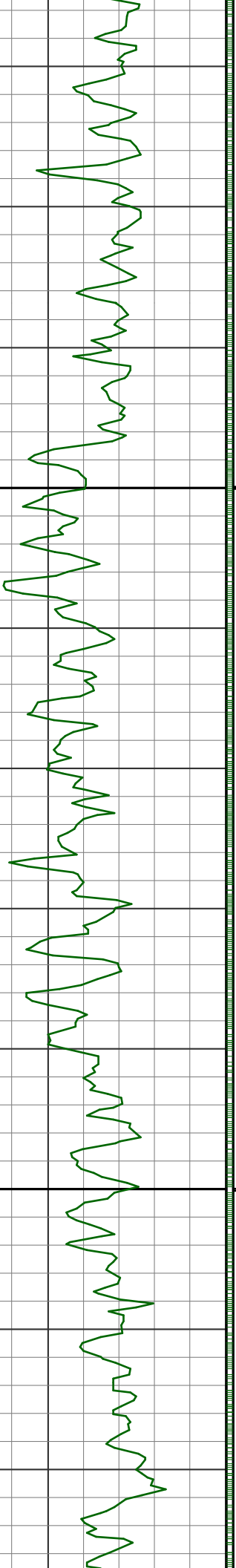




950

975



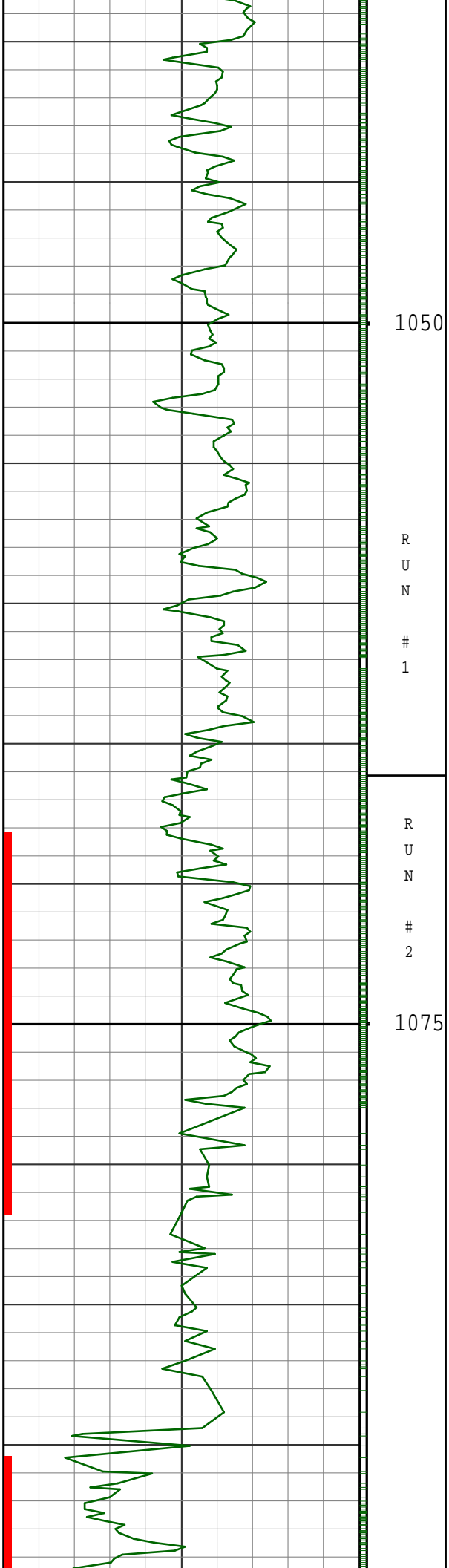


1000

1025

12.1 16.2
11 982.9

12.5 16.5
12 1021.8



1050

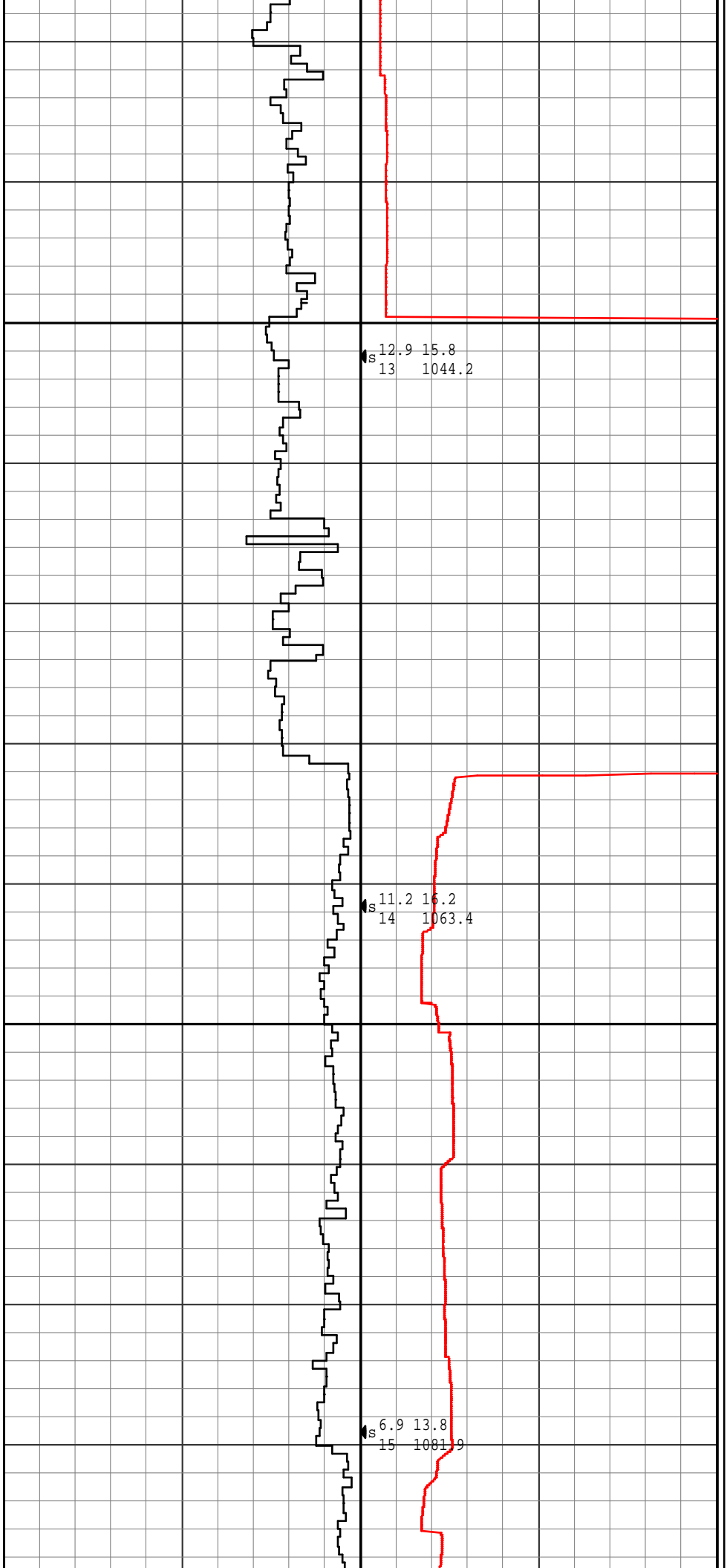
R
U
N

1

1075

R
U
N

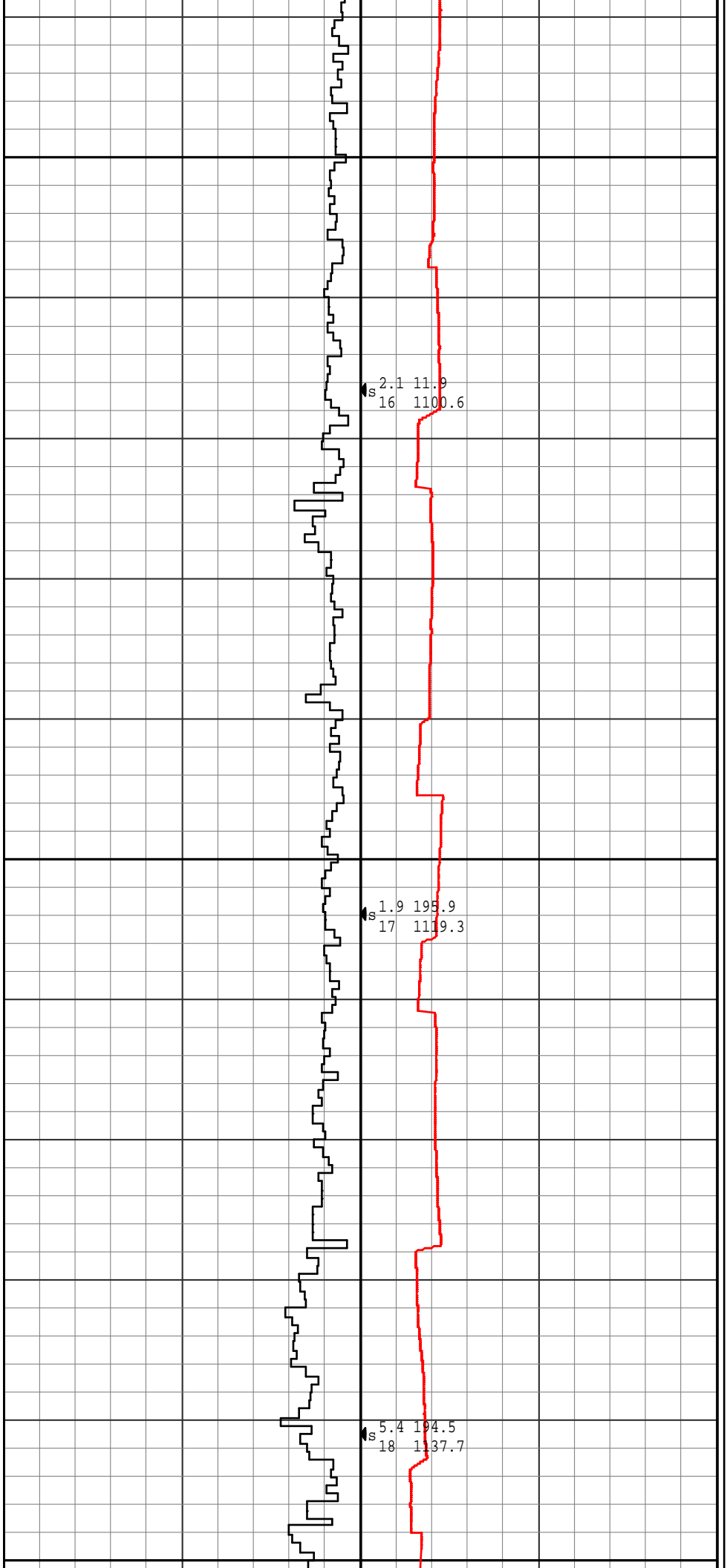
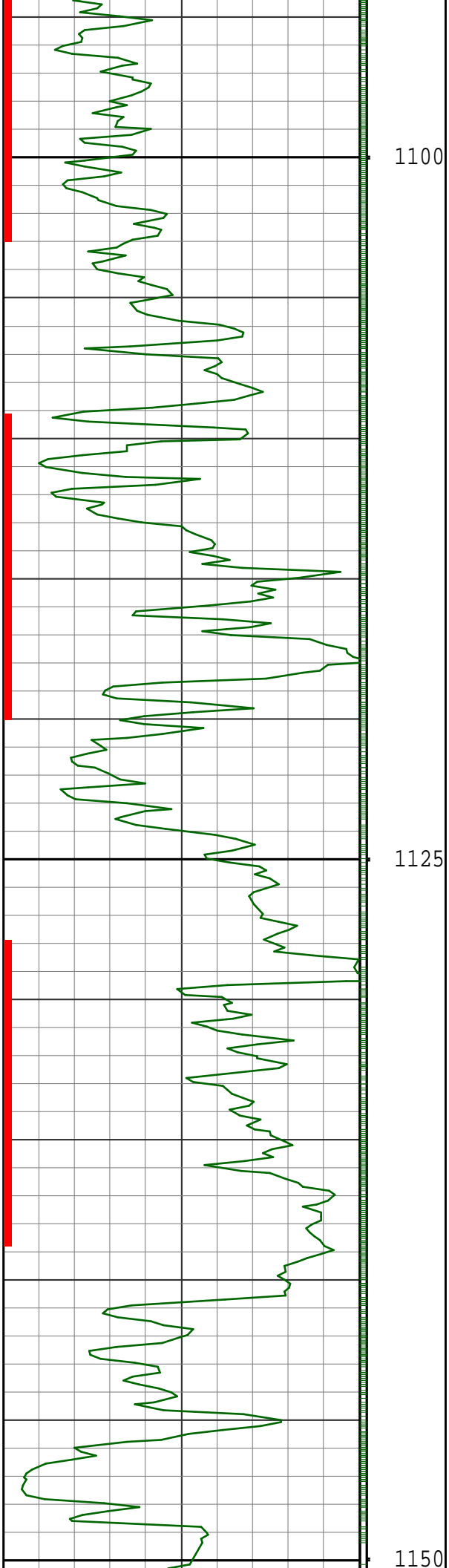
2

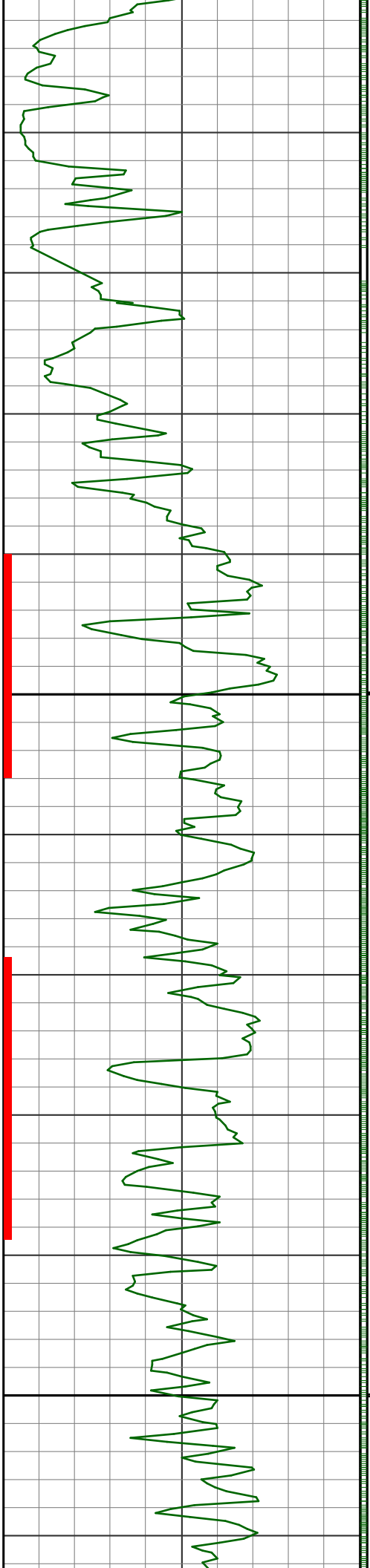


12.9 15.8
S 13 1044.2

11.2 16.2
S 14 1063.4

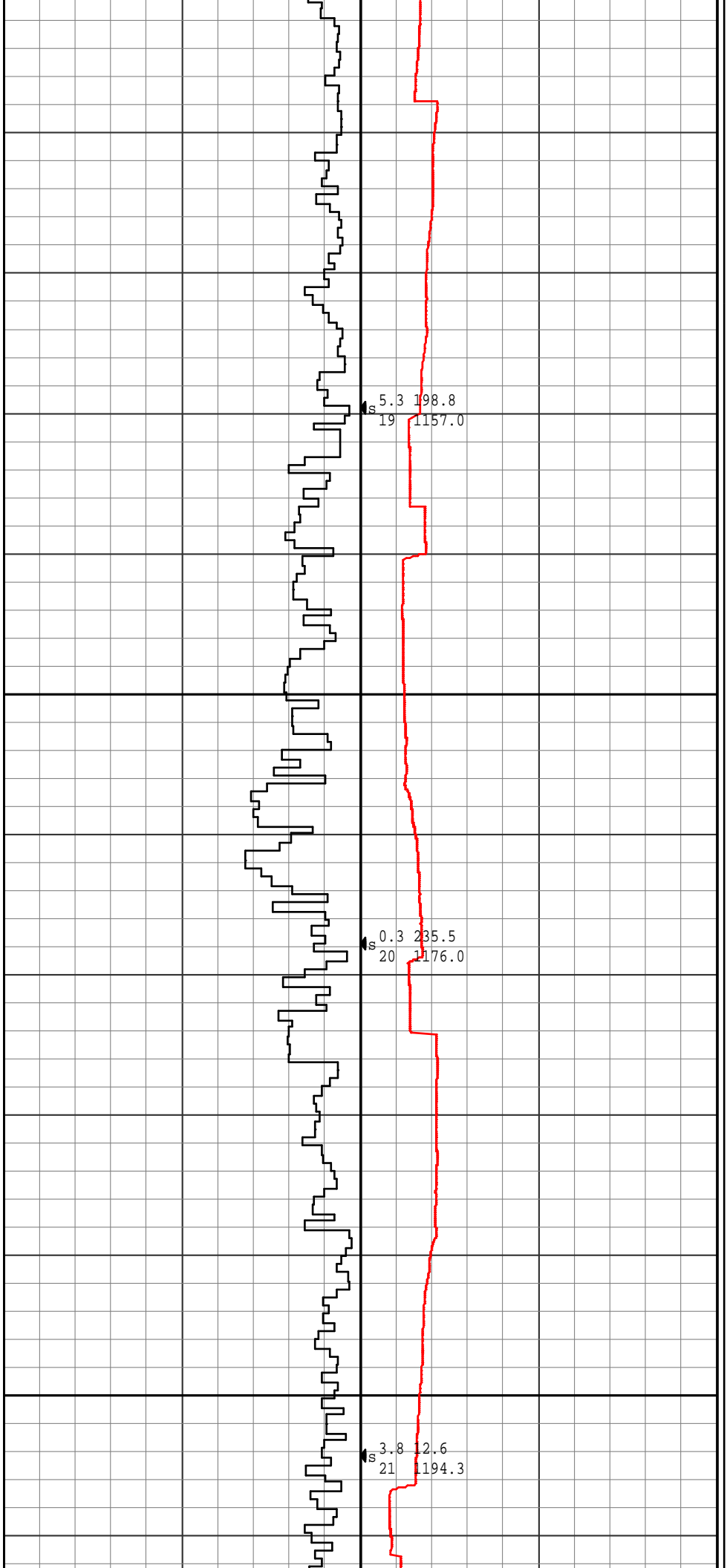
6.9 13.8
S 15 1081.9

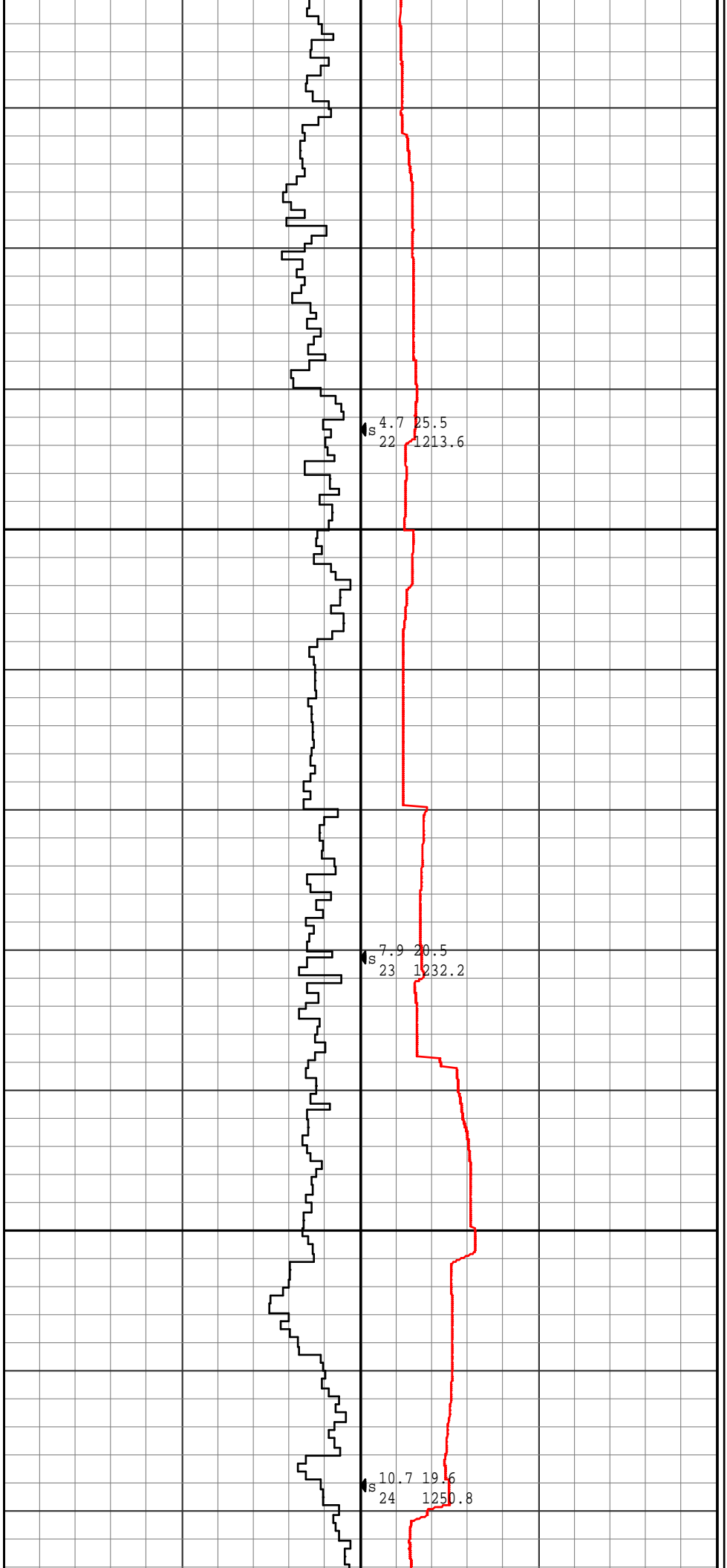
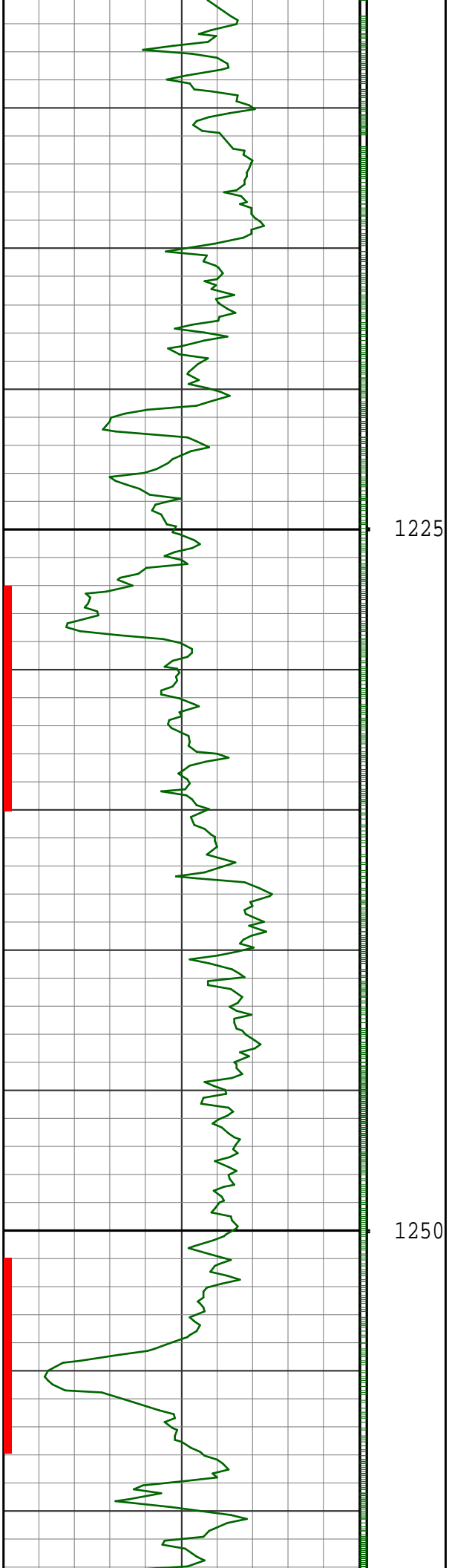


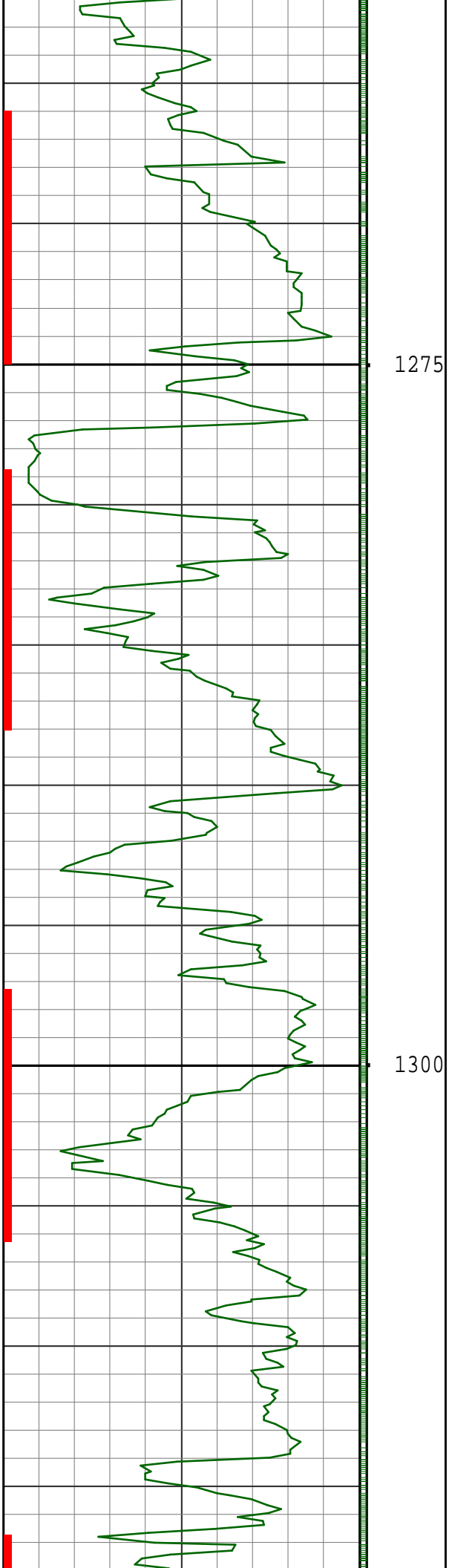


1175

1200

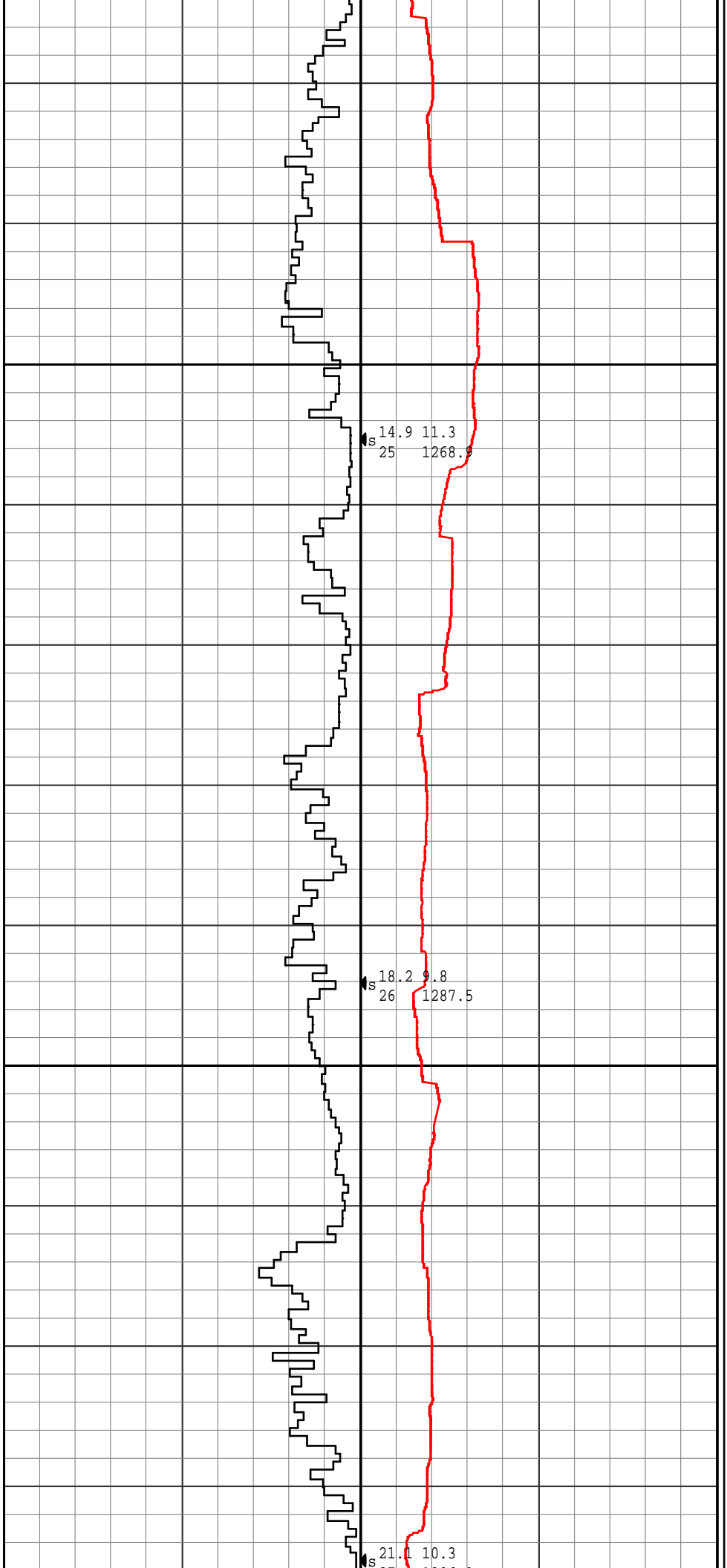






1275

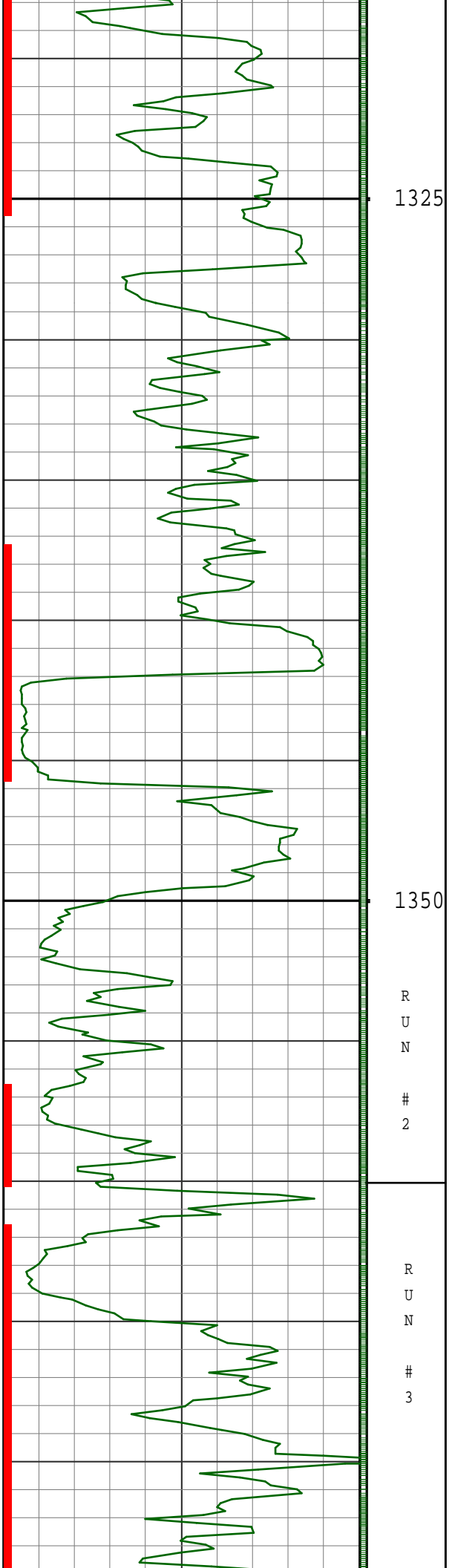
1300



s 25 14.9 11.3 1268.9

s 26 18.2 9.8 1287.5

s 21.1 10.3



1325

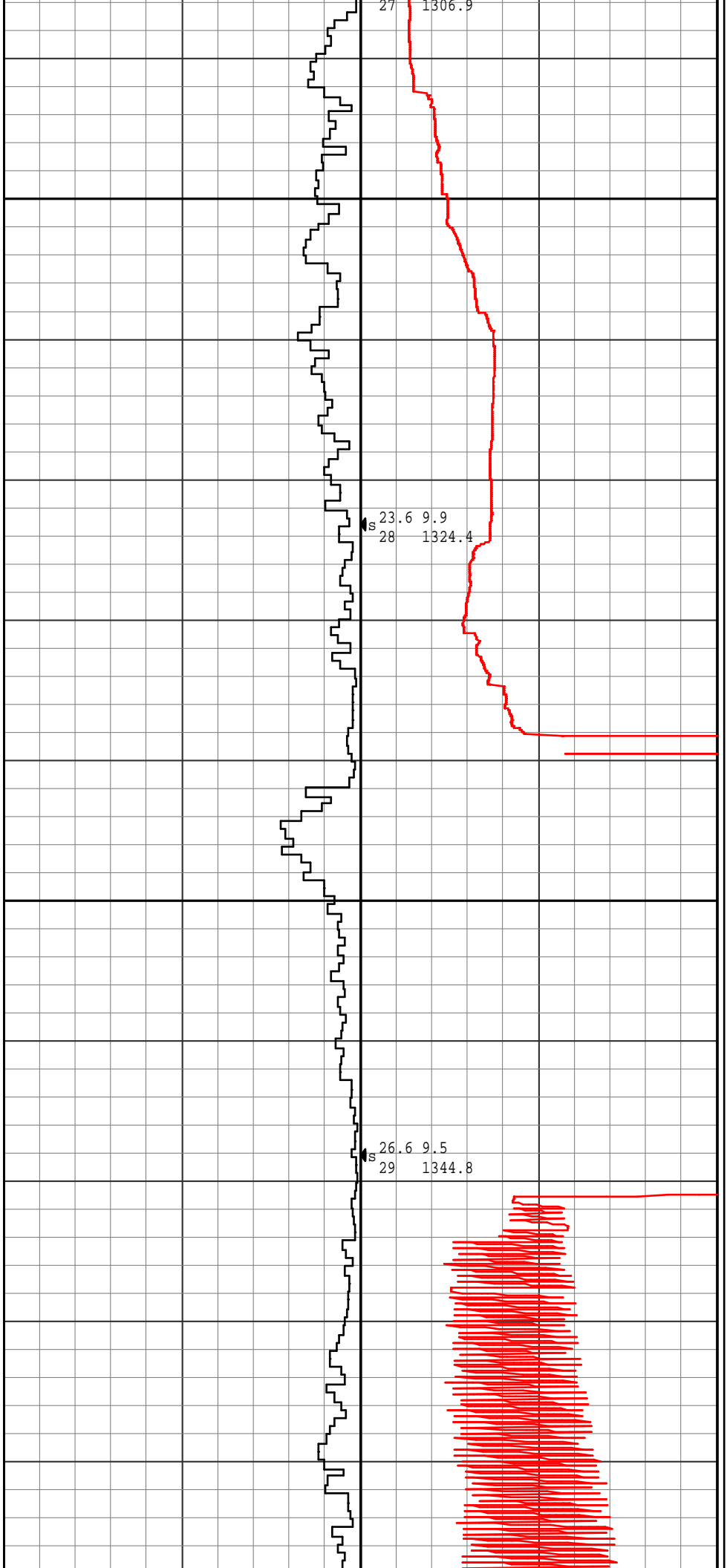
1350

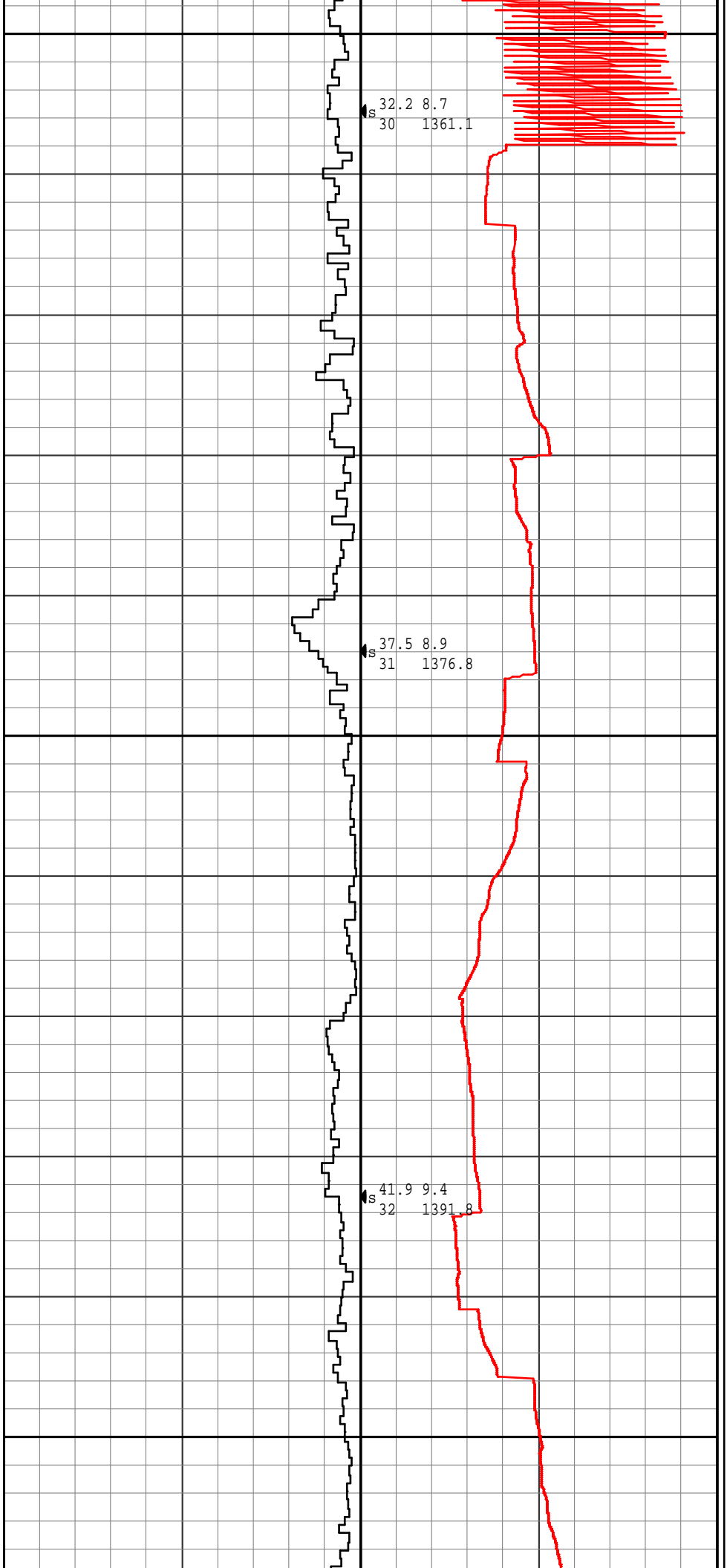
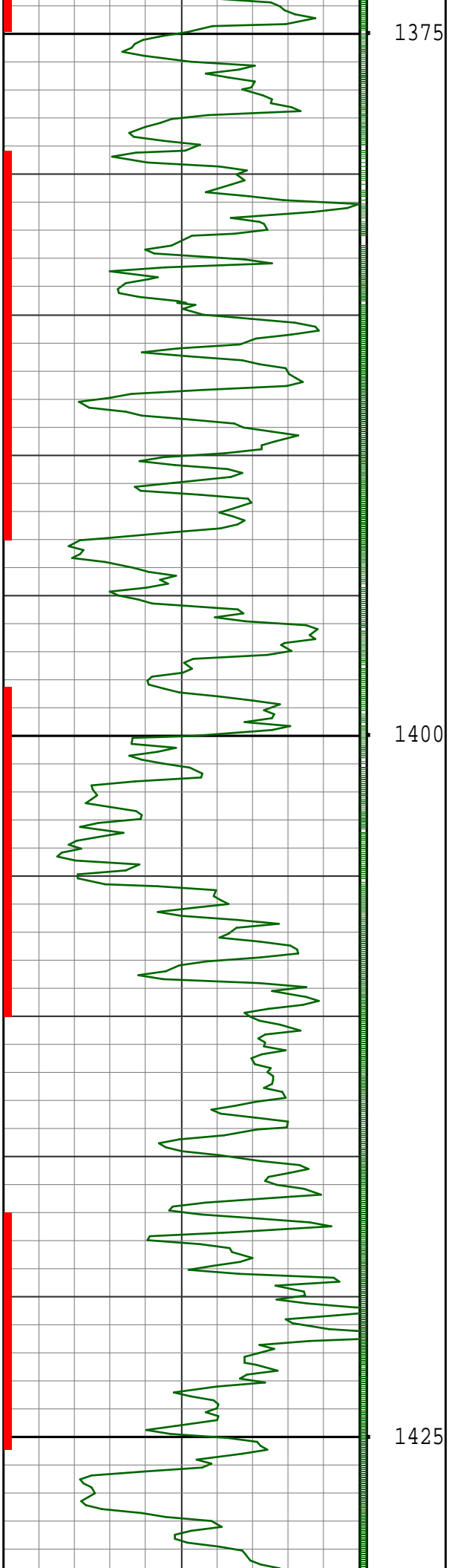
R
U
N

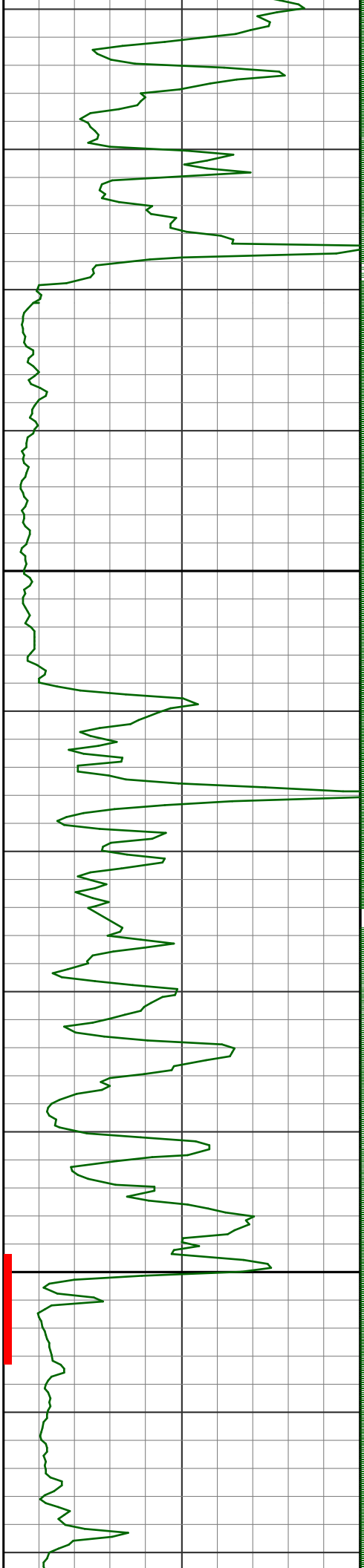
2

R
U
N

3







1450

R
U
N

3

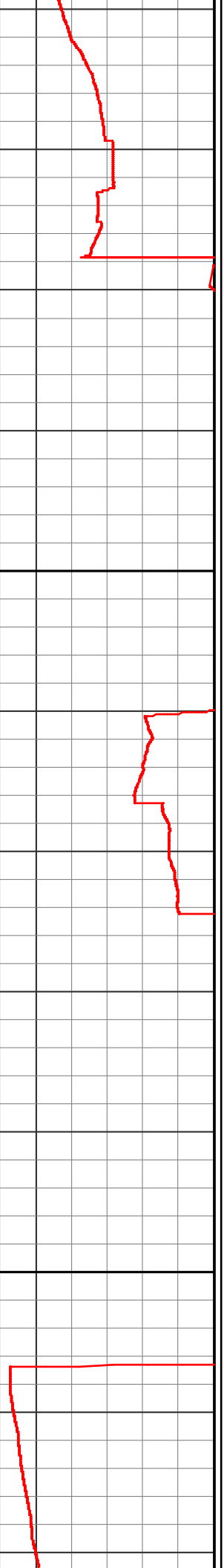
1475

R
U
N

S 43.5 9.3
33 1404.4

S 43.2 9.9
34 1419.3

S 43.5 10.1
35 1431.9



4

1500

1525

45.1 9.0
36 1445.4

45.8 8.7
37 1458.7

[illegible]